



LIVING MATHS
Innovative education since 1995

The Living Maths
Mathletics Olympiad 2006
Grade 1

NAME: _____

NAME: _____

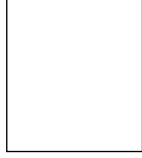
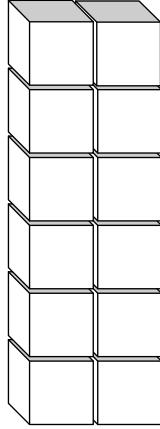
TEACHERS PLEASE NOTE:

CASIO

- Questions must be answered on the question paper in the blocks provided.
- Please explain the instructions to the learners.
- Please read the questions to the learners.
- Usage of concrete apparatus is permitted (E.g. Counters, blocks, etc.)
- Learners may write as individuals or pairs — They must print their names on the top of this paper.
- Have fun!



1) How many blocks are used to build the wall below?



(1 mark)

Fill in the missing numbers.

2) $3 + 2 = \square$

5) $4 + 5 = \square$

3) $12 - \square = 6$

6) $10 - 10 = \square$

4) $\square + 7 = 10$

7) $13 - 5 = \square$

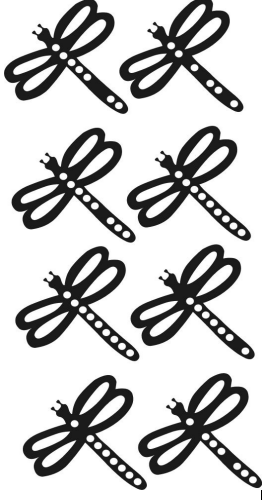
(6 marks)

8) Fill in the missing numbers.

12	14	16	<input type="text"/>	<input type="text"/>	22
----	----	----	----------------------	----------------------	----

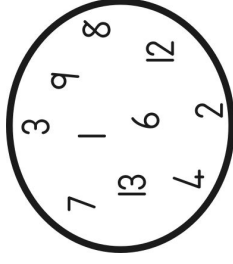
(1 mark)

9) How many dragonflies below have exactly 7 white dots on them?



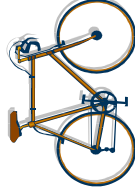
(1 mark)

10) Draw a ring around each **even** number that is inside the circle below.



(1 mark)

11) A bicycle has 2 wheels. How many wheels will 5 bicycles have altogether?



(1 mark)

12) How many legs will 3 dogs have altogether?



(1 mark)

13) Double the following numbers:

7

9

(2 marks)

Solve these word problems:

14) Ben has R11. He needs double this amount to buy a gift. How much does the gift cost?

15) Bella has 6 dolls. She gets 6 more. How many dolls does she have altogether?

16) David has 7 sweets. 3 are red and 4 are green. How many blue sweets does he have?

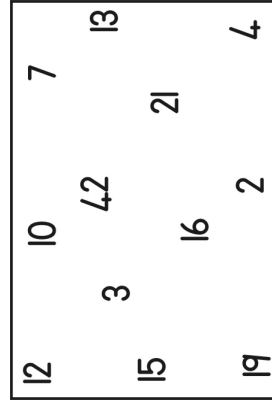
17) Fatima baked 18 muffins. She ate half of them. How many muffins does she have left?

(4 x 1 mark each)

18) Turn **pb** upside down and draw what it looks like?

(1 mark)

19) Draw circles around the numbers that are **both greater than 8 and less than 22**.



(7 marks)

20) What number comes next in the number pattern below?

4; 7; 10; 13;

(1 mark)

21) 6 chickens each laid 3 white eggs and 1 speckled egg. How many eggs were there altogether?

(1 mark)

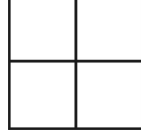
22) 2 oranges weigh the same as 3 bananas. 2 apples weigh the same as one banana. How many apples weigh the same as 2 oranges?

(1 mark)

23) If I double a number and then add 2, I have an answer of 12. What was the number that I started with?

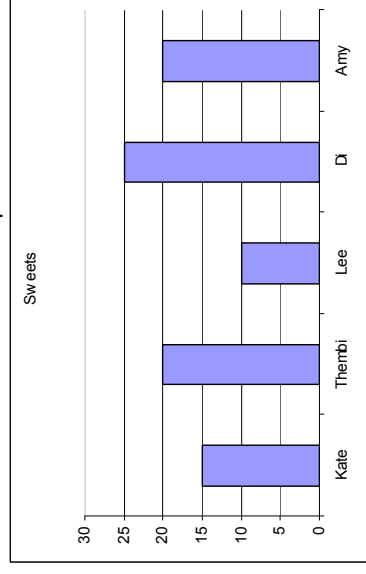
(1 mark)

24) How many squares of varied sizes are in the picture below?



(1 mark)

25) Below is a graph that shows how many sweets 5 girls each have. How many more sweets does Di have compared with Lee?



(1 mark)

Paper written by Steve Sherman